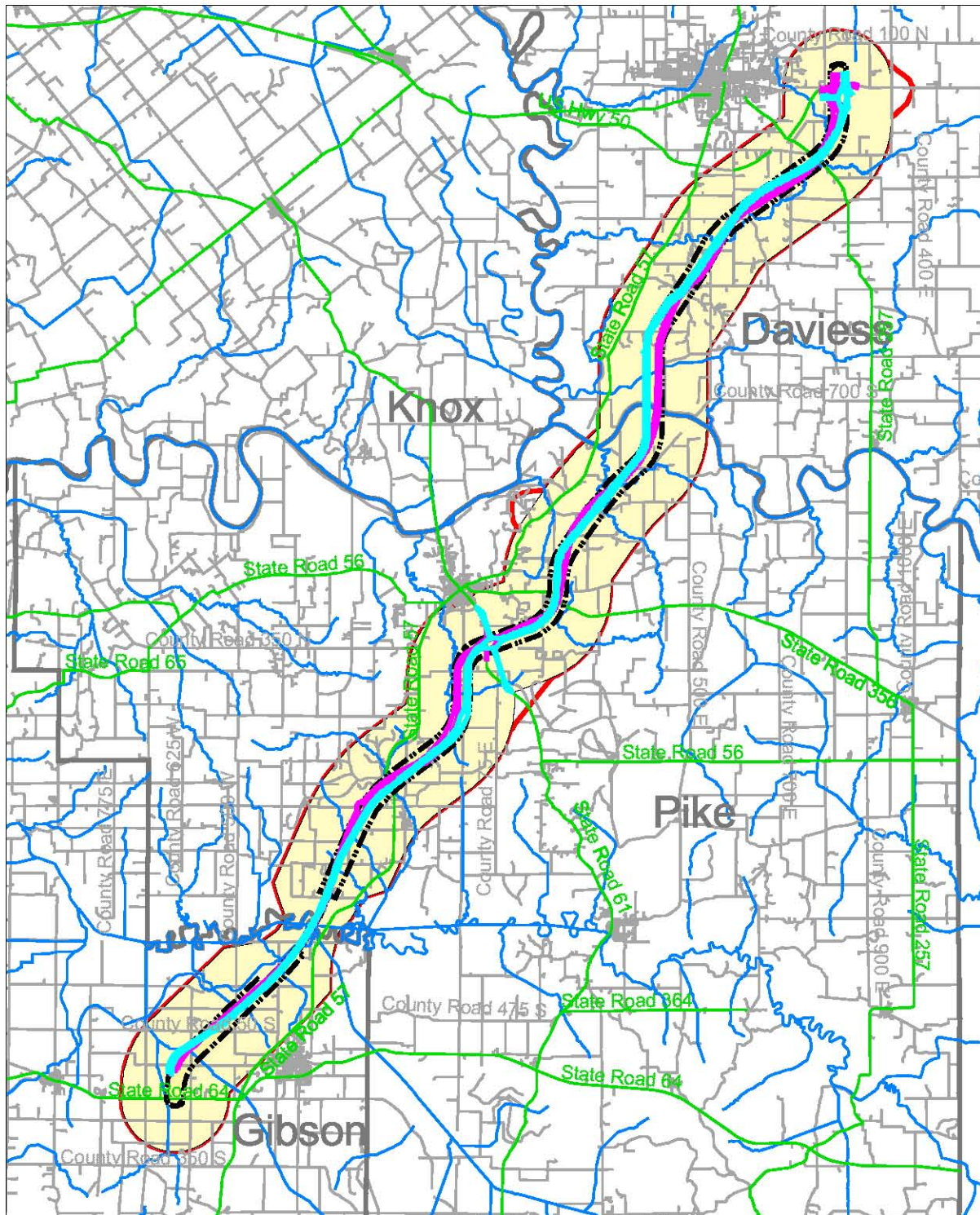


APPENDIX A

MAPS OF AREA OF POTENTIAL EFFECTS









Map 1: I-69 Evansville to Indianapolis Study Section 2: Gibson, Pike, and Daviess Counties

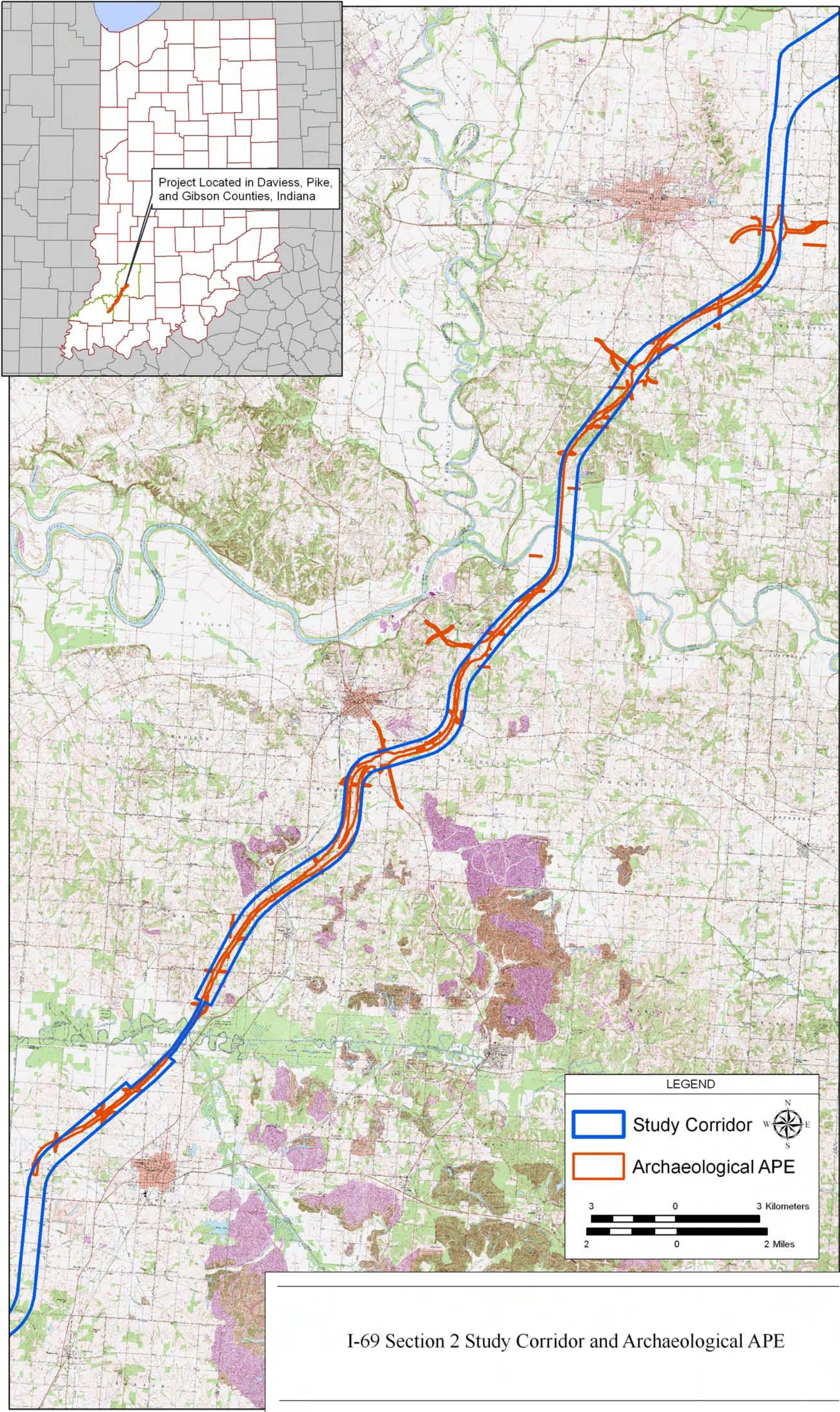


A horizontal scale bar with alternating black and white segments. Above the bar are numerical markers at 0, 1, 2, 3, 4, and 5, followed by the word "Miles". The bar represents a distance of 5 miles.

Note: GIS data used to create this map are from the best known sources existing at this time. However, experience shows that many national datasets such as cemeteries, churches, airports, schools, kerst, etc. are not all inclusive. Some national datasets are created on a much smaller scale than that mapped here and as a result have positional inaccuracies. Use of this map should be limited to planning, but should not replace field review or background checks with other sources.



-  Original Area of Potential Effects
 Expanded Area of Potential Effects
 2000-ft Corridor
 Alternative A
 Alternative B
 County Roads
 Major Streets
 Rivers and Streams



I-69 Section 2 Study Corridor and Archaeological APE